

Counting on Our Jewish Educators 2020-2021

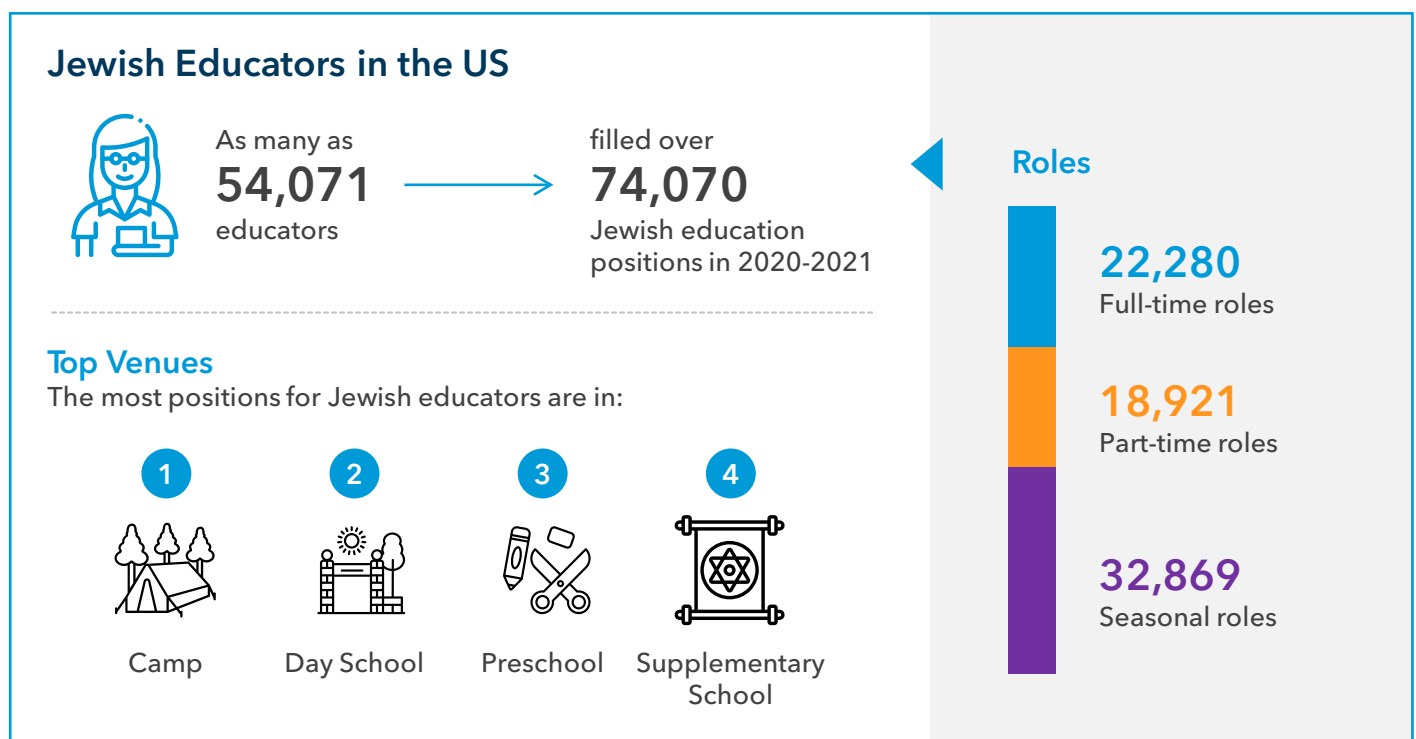
The success of Jewish educational programs depends, in large part, on the expertise, talent and professionalism of the Jewish education workforce. In order to design programs that better support the capacity of Jewish educators to effectively and meaningfully serve their learners, we need to know who Jewish educators are and what they need to succeed in their work.

About the Census

If we want to support the professional growth of Jewish educators, we need to understand the size and scope of the Jewish education workforce. How many Jewish educators are there in the U.S.? In what kinds of settings do they work?

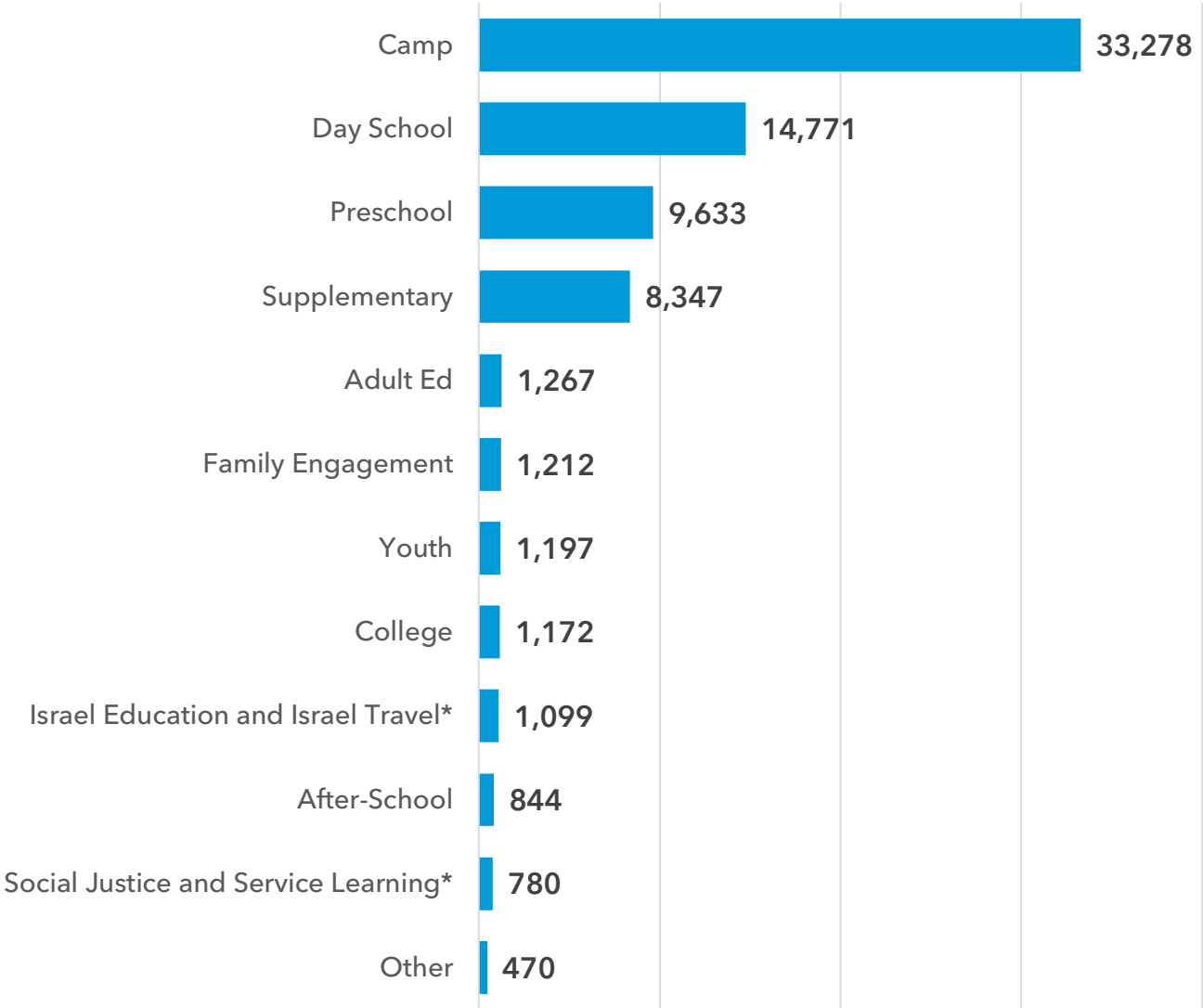
The CASJE National Jewish Educator Census offers an estimate of the number of individuals working as Jewish educators in the U.S. in 2020-2021 across multiple settings. These estimates reflect the size and scope of the workforce in the midst of the Covid-19 pandemic. The Census was conducted as part of the larger CASJE Career Trajectories Study, a multi-year, multi-strand research project addressing the recruitment, retention, and development of educators working in Jewish settings in North America. This study was funded by the William Davidson Foundation and the Jim Joseph Foundation. You can read more about the study [here](#).

Key Findings from the National Jewish Educator Census



In 2020-2021 camps, day schools and yeshivas, supplementary schools, and early childhood programs had the most positions for Jewish educators, including full-time, part-time and seasonal positions.

Jewish Educational Positions in the US

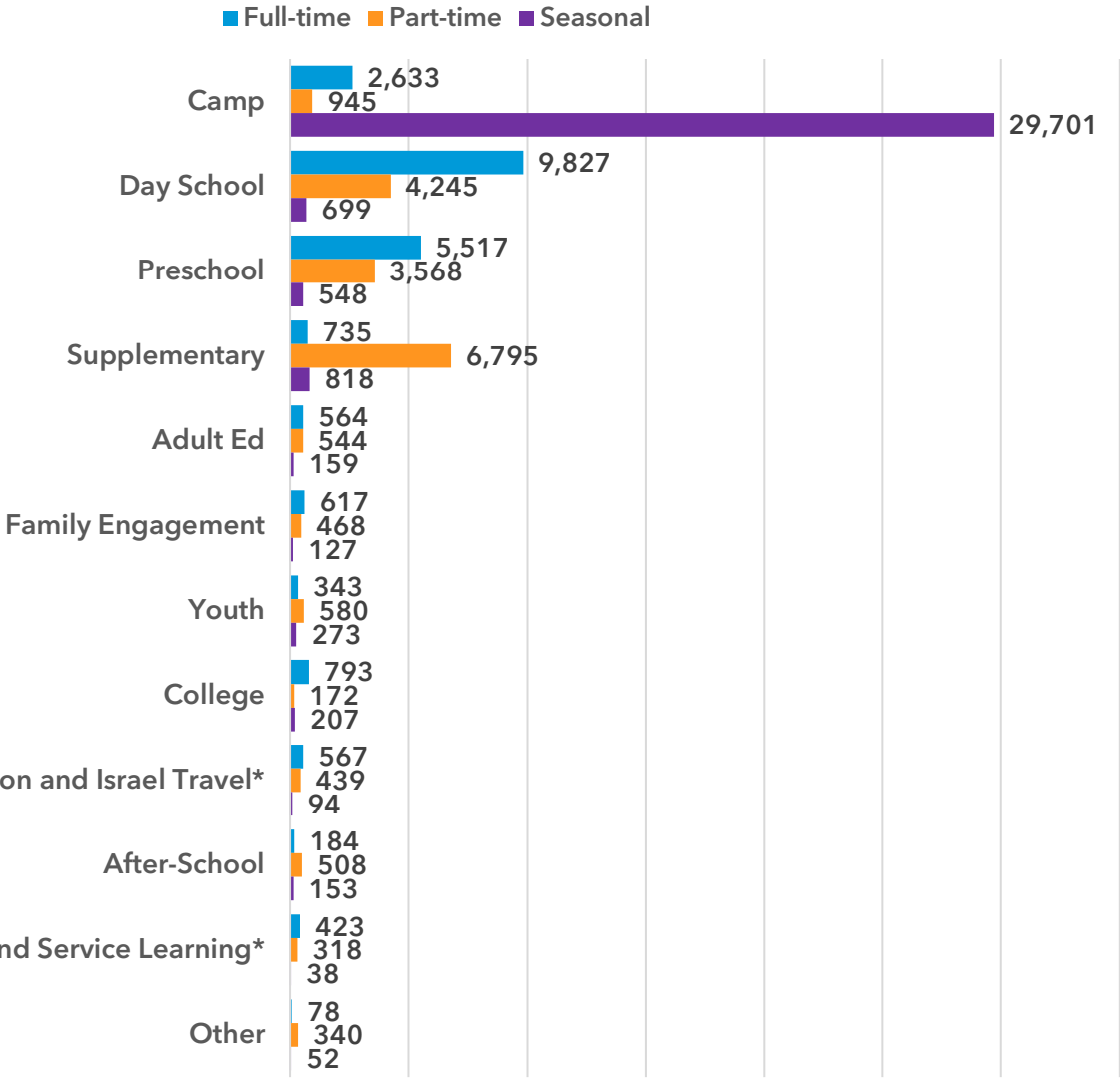


*These sectors reflect educators housed across multiple settings, including: day schools, college campus, congregations, and independent organizations.

Note: Does not include pulpit Rabbis where teaching is not their primary role
Orthodox congregations were not included in this study. Centralized data was provided by the Orthodox Union for national Jewish educational staff, this includes educators who are not pulpit rabbis who work out of synagogues.

In 2020-2021 day schools and yeshivas offered the most full-time positions for Jewish educators, followed by early childhood, camp, and supplementary schools.

Full-time Jewish Educational Positions in the US



You can learn more details about the Census methodology, including inclusion criteria and estimation strategies [here](#).

The CASJE National Jewish Educator Census was sponsored by a generous grant from the Jim Joseph Foundation
 Principal Investigator: Michael J. Feuer, PhD, Dean of the Graduate School of Education and Human Development, George Washington University
 Census Analysis: Naomi Chudowsky, PhD and Victor Chudowsky, PhD, True Score Consulting
 CASJE Advisory Board Liaison: Henry Braun, PhD, Boston College
 CASJE Managing Director: Arielle Levites, PhD, George Washington University
 Census Data Collection: Ariela Greenberg, PhD, The Greenberg Team